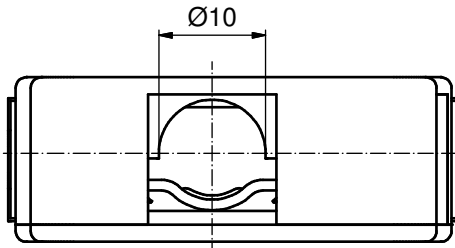
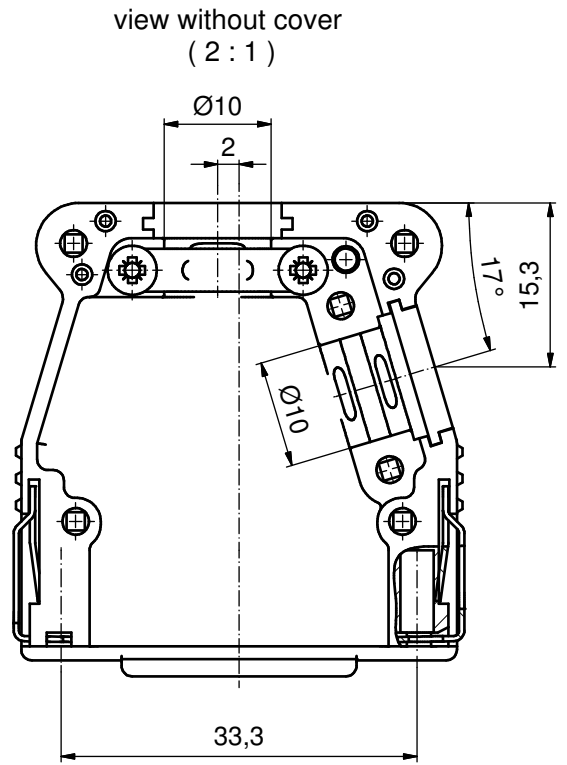
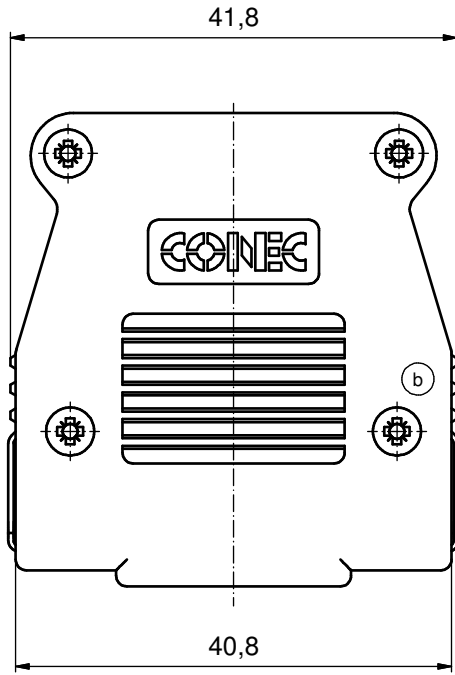
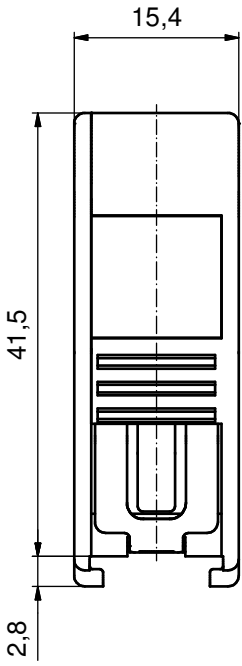


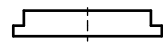
6 5 4 3 2 1



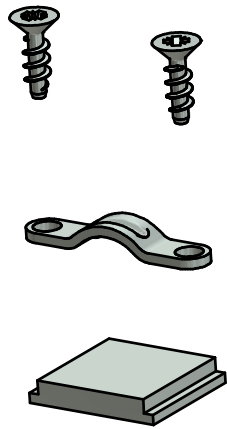
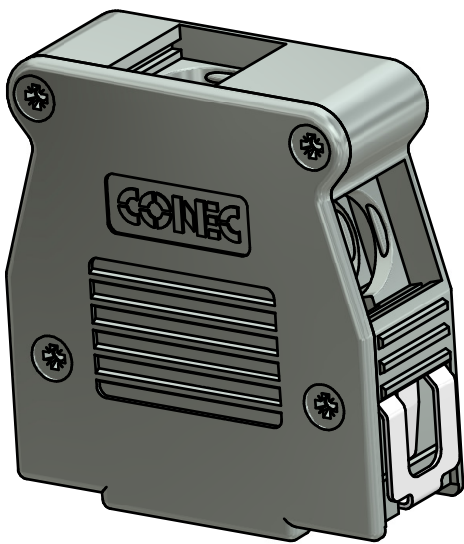
COUNTERSUNK HEAD SCREWS (6x)



CABLE STRAIN RELIEF



BLANKING PLUG



- HOOD ASSEMBLY CONSISTS OF:**
1. HOOD + COVER: ABS UL 94 V-0; NICKEL PLATED
 2. BLANKING PLUGS: ABS UL 94 V-0; NICKEL PLATED
 3. CABLE STRAIN RELIEF: STEEL; NICKEL PLATED
 4. CLIP: STAINLESS STEEL
 5. COUNTERSUNK HEAD SCREWS: STEEL; NICKEL PLATED

Directive 2002/95/EC RoHS compliant

THIS DRAWING MAY NOT BE COPIED OR REPRODUCED IN ANY WAY, AND MAY NOT BE PASSED ON TO A THIRD PARTY WITHOUT WRITTEN PERMISSION. OWNERSHIP AND COPYRIGHT OF CONEC GmbH DO NOT ALTER CAD DRAWING BY HAND				tolerance	dim. in mm	scale: 2:1		
				date		name	material: see drawing	
				drawn	24.09.14	Henneboel	title: Plastic Hood 15pos with Snap Lock / top and side cable exit	
				appd.	24.09.14	Strakerjahn		
			norm					
			d-old			dwg no:	DIN-A3	
			a	Original			16K1A3530	sh: 1
			rev.	description	date	name	part no: 16-001760	



6 5 4 3 2 1