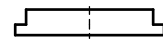


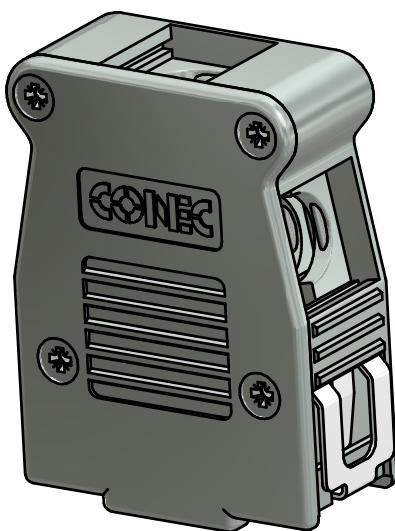
COUNTERSUNK HEAD SCREWS  
(6x)



CABLE STRAIN RELIEF



BLANKING PLUG



**HOOD ASSEMBLY CONSISTS OF:**

1. HOOD + COVER: ABS UL 94 V-0; NICKEL PLATED
2. BLANKING PLUGS: ABS UL 94 V-0; NICKEL PLATED
3. CABLE STRAIN RELIEF: STEEL; NICKEL PLATED
4. CLIP: STAINLESS STEEL
5. COUNTERSUNK HEAD SCREWS: STEEL; NICKEL PLATED

Directive 2002/95/EC RoHS compliant

THIS DRAWING MAY NOT BE COPIED OR REPRODUCED IN ANY WAY, AND MAY NOT BE PASSED ON TO A THIRD PARTY WITHOUT WRITTEN PERMISSION. OWNERSHIP AND COPYRIGHT OF CONEC GmbH

DO NOT ALTER CAD DRAWING BY HAND

rev.	description	date	name	tolerance	dim. in mm
a	Original				
		drawn	24.09.14	Henneboel	
		appd.	24.09.14	Strakerjahn	
		norm			
		d-old			



scale:	2:1	
material:	see drawing	
title:	Plastic Hood 9pos with Snap Lock / top and side cable exit	
dwg no:	16K1A3529	DIN-A3 sh: 1
part no:	16-001750	